

## NEUTRAL CONCENTRATE™

### PREMIUM 100% ACRYLIC EMULSION

Designed for maximum performance and weather resistance. Neutral Concentrate is available with or without sand. Neutral Concentrate can also be used as an acrylic resurfacer filler coat.

PRODUCT #	DESCRIPTION	COVERAGE	WEIGHT	PRICE
C1360K	30 - Gallon Keg	5400 sq. ft.	305 lbs.	\$ 383.99
C1360D	55 - Gallon Drum	9900 sq. ft.	570 lbs.	\$ 591.99
C1360T	275 - Gallon Tote	49500 sq. ft.	2,875 lbs.	\$ 2,976.99
C1360B	Bulk	-	-	- quoted -

**MIXING PROCEDURES:**

*For use as a color coat:*

Neutral Concentrate.....55 gallons  
 Water.....28-33 gallons  
 ColorPlus Pigment Dispersion.....4 gallons  
 Sand [80-100 mesh].....400 lbs.

*For use as an acrylic resurfacer:*

Neutral Concentrate.....55 gallons  
 Water.....30-33 gallons  
 Sand [50-60 mesh].....up to 600 lbs.

**MATERIAL REQUIREMENTS [coverage - 180 sf/gal]:**

*For use as a color coat:*  
 .05 to .07 gallon per square yard per coat

*For use as an acrylic resurfacer:*  
 .07 to .09 gallon per square yard per coat



Can also be used as an acrylic resurfacer filler coat



## NEUTRAL CONCENTRATE™ WITH SAND

### PREMIUM 100% ACRYLIC EMULSION WITH SAND

PREMIUM 100% ACRYLIC EMULSION WITH SAND

PRODUCT #	DESCRIPTION	COVERAGE	WEIGHT	PRICE
C1365P	5 - Gallon Pail	625 sq. ft.	66 lbs.	\$ 55.99
C1365K	30 - Gallon Keg	3750 sq. ft.	390 lbs.	\$ 383.99
C1365D	55 - Gallon Drum	6875 sq. ft.	660 lbs.	\$ 591.99
Note: Neutral Concentrate With Sand is not available in 275 - Gallon Totes				
C1365B	Bulk	-	-	- quoted -

**MIXING PROCEDURES:**

*For use as a color coat:*

Neutral Concentrate with Sand .....30 gallons  
 Water.....12 gallons  
 ColorPlus Pigment Dispersion .....2 gallons

**MATERIAL REQUIREMENTS [coverage - 125 sf/gal]:**

*For use as a color coat:*  
 .07 to .09 gallon per square yard per coat

## FLEXIBLE CONCENTRATE

### ELASTOMERIC COLOR COATING BASE TO BE MIXED WITH COLORPLUS PIGMENT DISPERSION FOR LONG-TERM FLEXIBILITY

PRODUCT #	DESCRIPTION	COVERAGE	WEIGHT	PRICE
C1455K	30 - Gallon Keg	5400 sq. ft.	305 lbs.	\$ 444.99
C1455D	55 - Gallon Drum	9900 sq. ft.	570 lbs.	\$ 704.99

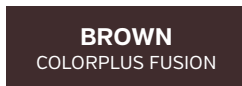


**MIXING PROCEDURES:**

Flexible Concentrate ..... 55 gallons  
 Water.....28-33 gallons  
 ColorPlus Pigment Dispersion .....4 gallons  
 Sand [80-100 Mesh] .....400 lbs.

**MATERIAL REQUIREMENTS [coverage - 180 sf/gal]:**

.05 to .07 gallons per square yard per coat. A minimum of two coats are recommended.



**NOTE:** Colors will vary somewhat due to printing limitations. Ask your SealMaster Representative for a color chip card for more accurate representation.

\*Solar Reflectance Index (SRI) is the percentage of solar energy that is reflected by a surface. These specific colors qualify for the LEED [Leadership in Energy and Environmental Design] program under Section SS Credit 7.1: Heat Island Effect: Non-Roof. For more information visit [www.usgbc.org](http://www.usgbc.org) or contact a LEED accredited professional.