

SportMaster[®]

SPORT SURFACES

OFFICIAL PLAYING SURFACE OF...



Tournament-quality sport surfacing products.

SPORT SURFACING



SportMaster® SPORT SURFACES



COLORPLUS™ SYSTEM

A 100% ACRYLIC, SPORT SURFACING SYSTEM FOR TENNIS, BASKETBALL, AND MULTIPURPOSE COURT SURFACES

IDEAL FOR APPLICATION ON ASPHALT, CONCRETE AND EXISTING SPORT SURFACES

HOW THE SYSTEM WORKS

The ColorPlus System consists of a 100% acrylic Neutral Concentrate (available with or without sand) and the ColorPlus Pigment Dispersion. What is truly remarkable about the ColorPlus System is the fact that only 2 gallons of ColorPlus pigment are needed to colorize an entire 30 gallon keg of Neutral Concentrate.

EASE OF MIXING

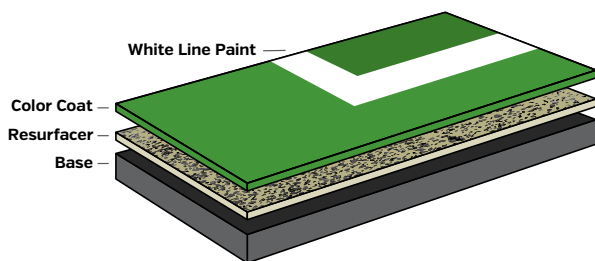
ColorPlus is a highly concentrated pigment dispersion that disperses readily in Neutral Concentrate. Our proprietary technology enables ColorPlus to disperse completely with minimal mixing.

COLORPLUS SYSTEM

Thickness: Approx. 35-40 mils

1 Coat - Acrylic Resurfacer

2 Coats of Color



COLORPLUS™ PIGMENT DISPERSION

A HIGHLY CONCENTRATED
PIGMENT DISPERSION

Designed to disperse readily and completely in Neutral Concentrate.



| PRODUCT # | DESCRIPTION | WEIGHT | PRICE |
|-----------|------------------------------------|---------|----------|
| C1374G | Forest Green, 1 - Gallon Pail | 17 lbs. | \$95.99 |
| C1372G | Light Green, 1 - Gallon Pail | 17 lbs. | \$95.99 |
| C1373G | Dark Green, 1 - Gallon Pail | 17 lbs. | \$95.99 |
| C1378G | Beige, 1 - Gallon Pail | 17 lbs. | \$95.99 |
| C1370G | Red, 1 - Gallon Pail | 17 lbs. | \$76.99 |
| C1386G | Maroon, 1 - Gallon Pail | 17 lbs. | \$76.99 |
| C1388G | Tournament Purple, 1 - Gallon Pail | 17 lbs. | \$195.99 |
| C1380G | Gray, 1 - Gallon Pail | 17 lbs. | \$76.99 |
| C1384G | Blue, 1 - Gallon Pail | 17 lbs. | \$76.99 |
| C1385G | Light Blue, 1 - Gallon Pail | 17 lbs. | \$86.99 |
| C1399G | Dove Gray, 1 - Gallon Pail | 17 lbs. | \$76.99 |
| C1383G | Ice Blue, 1 - Gallon Pail | 17 lbs. | \$76.99 |
| C1389G | Sandstone, 1 - Gallon Pail | 17 lbs. | \$95.99 |
| C1379G | Orange, 1 - Gallon Pail | 17 lbs. | \$125.99 |
| C1390G | Yellow, 1 - Gallon Pail | 17 lbs. | \$95.99 |
| C1392G | Brite Red, 1 - Gallon Pail | 17 lbs. | \$331.99 |
| C1660G | Black Dispersion, 1 - Gallon Pail | 11 lbs. | \$27.99 |

COLORPLUS FUSION

For more than 100 additional color choices, check out ColorPlus Fusion here:

www.sportmaster.net/colorplusfusion

MAROON

GRAY

LIGHT BLUE

ICE BLUE
LEED CREDIT *SRI=62

ORANGE

FOREST GREEN

TOURNAMENT
PURPLE

BLUE

DOVE GRAY
LEED CREDIT *SRI=33

SANDSTONE
LEED CREDIT *SRI=46

YELLOW

LIGHT GREEN
LEED CREDIT *SRI=31



NEUTRAL CONCENTRATE™

PREMIUM 100% ACRYLIC EMULSION

Designed for maximum performance and weather resistance. Neutral Concentrate is available with or without sand. Neutral Concentrate can also be used as an acrylic resurfacer filler coat.

| PRODUCT # | DESCRIPTION | COVERAGE | WEIGHT | PRICE |
|-----------|-------------------|---------------|------------|------------|
| C1360P | 5 - Gallon Pail | 900 sq. ft. | 48 lbs. | \$73.99 |
| C1360K | 30 - Gallon Keg | 5400 sq. ft. | 305 lbs. | \$518.99 |
| C1360D | 55 - Gallon Drum | 9900 sq. ft. | 570 lbs. | \$821.99 |
| C1360T | 275 - Gallon Tote | 49500 sq. ft. | 2,875 lbs. | \$4,107.99 |
| C1360B | Bulk | - | - | - quoted - |

MIXING PROCEDURES:

For use as a color coat:

Neutral Concentrate.....55 gallons
 Water.....28-30 gallons
 ColorPlus Pigment Dispersion.....4 gallons
 Sand (80-100 mesh).....400 lbs.

For use as an acrylic resurfacer:

Neutral Concentrate.....55 gallons
 Water.....30-33 gallons
 Sand (50-60 mesh).....up to 600 lbs.

MATERIAL REQUIREMENTS (coverage - 180 sf/gal):

For use as a color coat:
 .05 to .07 gallon per square yard per coat

For use as an acrylic resurfacer:
 .07 to .09 gallon per square yard per coat



NEUTRAL CONCENTRATE™ WITH SAND

PREMIUM 100% ACRYLIC EMULSION WITH SAND

| PRODUCT # | DESCRIPTION | COVERAGE | WEIGHT | PRICE |
|----------------------------------------------------------------------------|------------------|--------------|----------|------------|
| C1365P | 5 - Gallon Pail | 625 sq. ft. | 66 lbs. | \$73.99 |
| C1365K | 30 - Gallon Keg | 3750 sq. ft. | 390 lbs. | \$518.99 |
| C1365D | 55 - Gallon Drum | 6875 sq. ft. | 660 lbs. | \$821.99 |
| Note: Neutral Concentrate With Sand is not available in 275 - Gallon Totes | | | | |
| C1365B | Bulk | - | - | - quoted - |

MIXING PROCEDURES:

For use as a color coat:

Neutral Concentrate with Sand.....30 gallons
 Water.....12 gallons
 ColorPlus Pigment Dispersion.....2 gallons

MATERIAL REQUIREMENTS (coverage - 125 sf/gal):

For use as a color coat:
 .07 to .09 gallon per square yard per coat

FLEXIBLE CONCENTRATE

ELASTOMERIC COLOR COATING BASE TO BE MIXED WITH COLORPLUS PIGMENT DISPERSION FOR LONG-TERM FLEXIBILITY

| PRODUCT # | DESCRIPTION | COVERAGE | WEIGHT | PRICE |
|-----------|------------------|--------------|----------|----------|
| C1455K | 30 - Gallon Keg | 5400 sq. ft. | 305 lbs. | \$592.99 |
| C1455D | 55 - Gallon Drum | 9900 sq. ft. | 570 lbs. | \$960.99 |



MIXING PROCEDURES:

Flexible Concentrate.....55 gallons
 Water.....28-30 gallons
 ColorPlus Pigment Dispersion.....4 gallons
 Sand (80-100 Mesh).....400 lbs.

MATERIAL REQUIREMENTS (coverage - 180 sf/gal):

.05 to .07 gallons per square yard per coat. A minimum of two coats are recommended.

DARK GREEN

BROWN
COLORPLUS FUSION

BRITE RED

BEIGE

RED
LEED CREDIT *SRI=36

BLACK

NOTE: Colors will vary somewhat due to printing limitations. Ask your SealMaster Representative for a color chip card for more accurate representation.

*Solar Reflectance Index (SRI) is the percentage of solar energy that is reflected by a surface. These specific colors qualify for the LEED (Leadership in Energy and Environmental Design) program under Section SS Credit 7.1: Heat Island Effect: Non-Roof. For more information visit www.usgbc.org or contact a LEED accredited professional.



PICKLEMASTER™ SYSTEM

A SPECIALIZED COATING SYSTEM DESIGNED FOR USE ON PICKLEBALL COURT SURFACES



REVOLUTIONIZING PICKLEBALL COURT SURFACES

Pickleball court surfaces are identical to tennis and basketball surfaces, for asphalt or concrete courts. They are textured with a smooth and rounded, non-aggressive silica sand. This provides a slip-free surface in dry and wet conditions. Not only are these 100% acrylic surfaces safe and beautiful, but they also seal and preserve your asphalt and concrete investment for years of fun recreational use.

PickleMaster Benefits:

- Very low maintenance
- Ideal for minimizing surface glare
- Asphalt and concrete preservation
- Can be used with ProCushion layers to create cushioned pickleball courts

PICKLEMASTER

A SPECIALIZED COATING SYSTEM DESIGNED FOR USE ON PICKLEBALL COURT SURFACES

The neutral-based coating is designed to be tinted with ColorPlus Pigment Dispersion, resulting in 17 standard color choices and a larger palette of options with the ColorPlus Fusion blends.

PickleMaster is factory-textured to provide a safe, non-slip surface with a non-aggressive texture to minimize ball wear.

| PRODUCT # | DESCRIPTION | COVERAGE | WEIGHT | PRICE |
|-----------|------------------|--------------|----------|------------|
| C1298P | 5 - Gallon Pail | 625 sq. ft. | 66 lbs. | \$95.99 |
| C1298K | 30 - Gallon Keg | 3750 sq. ft. | 390 lbs. | \$649.99 |
| C1298D | 55 - Gallon Drum | 6875 sq. ft. | 660 lbs. | \$1,056.99 |

MIXING PROCEDURES:

PickleMaster.....55 gallons
SportMaster ColorPlus.....4 gallons
Water.....20-23 gallons

MATERIAL REQUIREMENTS (coverage - 125 sf/gal):

.07 to .09 gallon of PickleMaster per square yard per coat.

HOW THE SYSTEM WORKS

PickleMaster is available in 5-gal, 30-gal & 55-gal containers. The coating is produced and factory-blended with a specific blend of aggregates for slip-resistance, and comes in a neutral [untinted] base. 1 gallon of SportMaster ColorPlus Pigment Dispersion will fully pigment 15 gallons of PickleMaster. Each 30-gal keg requires a minimum of 2 ColorPlus gallons & the 55-gallon drum requires a minimum of 4 ColorPlus gallons.

**COLORPLUS
FUSION**

For more than 100 additional color choices, check out ColorPlus Fusion here:

www.sportmaster.net/colorplusfusion

| | | | | | |
|------------------------------------|------------|----------------------------------|----------------------------------|--------|-----------|
| MAROON | GRAY | LIGHT BLUE | ICE BLUE LEED CREDIT *SRI=62 | ORANGE | BRITE RED |
| TOURNAMENT PURPLE | BLUE | DOVE GRAY LEED CREDIT *SRI=33 | SANDSTONE LEED CREDIT *SRI=46 | YELLOW | BLACK |
| FOREST GREEN | DARK GREEN | BROWN COLORPLUS FUSION | | | |
| LIGHT GREEN LEED CREDIT *SRI=31 | BEIGE | RED LEED CREDIT *SRI=36 | | | |

NOTE: Colors will vary somewhat due to printing limitations. Ask your SealMaster Representative for a color chip card for more accurate representation.

*Solar Reflectance Index (SRI) is the percentage of solar energy that is reflected by a surface. These specific colors qualify for the LEED (Leadership in Energy and Environmental Design) program under Section SS Credit 7.1: Heat Island Effect: Non-Roof. For more information visit www.usgbc.org or contact a LEED accredited professional.



NEW PRODUCT

PICKLEMASTER[®] Ready To Use BASE

PICKLEMASTER READY-TO-USE BASE

IDEAL FOR DO-IT-YOURSELF APPLICATIONS & MAINTENANCE CREWS

PickleMaster RTU BASE is a specialized coating system designed for use on pickleball court surfaces. PickleMaster RTU BASE is designed to be mixed with ColorPlus Tint. Available in 17 standard colors plus over 100 color variations using ColorPlus Fusion System.

| PRODUCT # | DESCRIPTION | COVERAGE | WEIGHT | PRICE |
|-----------|------------------------------------------------------------------|-------------|---------|---------|
| C1299P | RTU BASE 5 - Gallon Pail (containing 4.5 Gal Neutral/Sand/Water) | 500 sq. ft. | 54 lbs. | \$90.99 |

MIXING PROCEDURES:

Use as is. Do not dilute. Simply stir, pour, and apply.

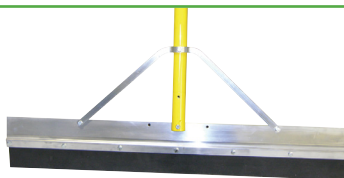
MATERIAL REQUIREMENTS

(coverage - 100 sf/gal):

.09 to .11 gallon of RTU BASE per square yard per coat. Two coats are recommended.



OFFICIAL COURT SURFACE OF



SPORT SQUEEGEE

AVAILABLE ON PAGE 118

NEW PRODUCT



COLORPLUS™ TINT

A HIGHLY CONCENTRATED PIGMENT DISPERSION

Designed to disperse readily and completely in Neutral Concentrate.

| PRODUCT # | DESCRIPTION | WEIGHT | PRICE |
|-----------|-------------------------------|--------|---------|
| C1374J | Forest Green, 24 oz. Jar | 3 lbs. | \$20.99 |
| C1372J | Light Green, 24 oz. Jar | 3 lbs. | \$20.99 |
| C1373J | Dark Green, 24 oz. Jar | 3 lbs. | \$20.99 |
| C1378J | Beige, 24 oz. Jar | 3 lbs. | \$20.99 |
| C1370J | Red, 24 oz. Jar | 3 lbs. | \$16.99 |
| C1386J | Maroon, 24 oz. Jar | 3 lbs. | \$16.99 |
| C1388J | Tournament Purple, 24 oz. Jar | 3 lbs. | \$42.99 |
| C1380J | Gray, 24 oz. Jar | 3 lbs. | \$16.99 |
| C1384J | Blue, 24 oz. Jar | 3 lbs. | \$16.99 |
| C1385J | Light Blue, 24 oz. Jar | 3 lbs. | \$18.99 |
| C1399J | Dove Gray, 24 oz. Jar | 3 lbs. | \$16.99 |
| C1383J | Ice Blue, 24 oz. Jar | 3 lbs. | \$16.99 |
| C1389J | Sandstone, 24 oz. Jar | 3 lbs. | \$20.99 |
| C1379J | Orange, 24 oz. Jar | 3 lbs. | \$27.99 |
| C1390J | Yellow, 24 oz. Jar | 3 lbs. | \$20.99 |
| C1392J | Brite Red, 24 oz. Jar | 3 lbs. | \$84.99 |
| C1660J | Black Dispersion, 24 oz. Jar | 3 lbs. | \$9.99 |

COLORPLUS FUSION

For more than 100 additional color choices, check out ColorPlus Fusion here:

www.sportmaster.net/colorplusfusion

MAROON

GRAY

LIGHT BLUE

ICE BLUE
LEED CREDIT *SRI=62

ORANGE

BRITE RED

TOURNAMENT
PURPLE

BLUE

DOVE GRAY
LEED CREDIT *SRI=33SANDSTONE
LEED CREDIT *SRI=46

YELLOW

BLACK

FOREST GREEN

DARK GREEN

BROWN
COLORPLUS FUSIONLIGHT GREEN
LEED CREDIT *SRI=31

BEIGE

RED
LEED CREDIT *SRI=36

NOTE: Colors will vary somewhat due to printing limitations. Ask your SealMaster Representative for a color chip card for more accurate representation.

*Solar Reflectance Index (SRI) is the percentage of solar energy that is reflected by a surface. These specific colors qualify for the LEED (Leadership in Energy and Environmental Design) program under Section SS Credit 7.1: Heat Island Effect: Non-Roof. For more information visit www.usgbc.org or contact a LEED accredited professional.



SportMaster®
SPORT SURFACES

SPORTMASTER® SYSTEM

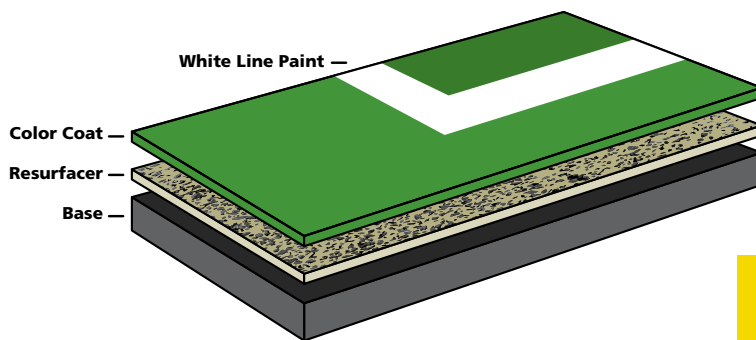
100% ACRYLIC COLOR COATINGS FOR
TENNIS COURTS, RUNNING TRACKS, AND
MULTIPURPOSE SPORT SURFACES



**OPTIMUM PERFORMANCE FOR BOTH PLAYER
AND SURFACE**

SportMaster® System Uses:

- Tennis Courts, Pickleball & Other Racquet Sports
- Basketball Courts
- Playgrounds & Game Courts
- Asphalt or Concrete Recreational Areas
- Multipurpose Courts



NEUTRAL READY MIX

A PREMIUM 100% ACRYLIC EMULSION

Neutral Ready Mix is ideal for maintenance crews and do-it-yourselfers. The proper sand and water is already added. Available in 17 standard colors plus over 100 color variations using ColorPlus Fusion System. Neutral Ready Mix is available in 5-gallon pails. [See page 118 for Sport Squeegee.]

| PRODUCT # | DESCRIPTION | COVERAGE | WEIGHT | PRICE |
|-----------|---------------------------------------------------------------------------------|-------------|---------|---------|
| C1285P | Neutral Ready Mix 5 - Gallon Pail [containing 4.5 Gal Neutral/Sand/Water] | 475 sq. ft. | 54 lbs. | \$70.99 |

MIXING PROCEDURES:

Use as is. Do not dilute. Simply stir,
pour, and apply.

MATERIAL REQUIREMENTS [coverage - 95 sf/gal]:

.09 to .11 gallon of Neutral Ready Mix
per square yard per coat. Two coats are
recommended.

NEW PRODUCT



SportMaster®
SPORT SURFACES

PROCUSHION™ SYSTEM

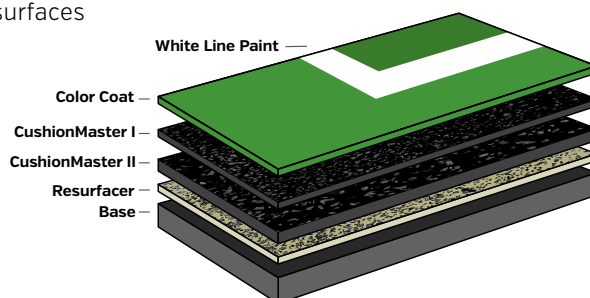
A 100% ACRYLIC, CUSHIONED SPORT SURFACING SYSTEM FOR TENNIS, BASKETBALL, AND OTHER RECREATIONAL AREAS



CUSHIONMASTER™ I & II CONTAIN POST-CONSUMER RECYCLED RUBBER

ProCushion System Uses:

- Tennis, Basketball & Pickleball Courts
- Recreational areas or game courts with tennis shoe traffic
- Walking and jogging trails
- Asphalt, concrete, or existing acrylic surfaces



There are multiple ProCushion alternative systems to meet your needs:

| PROCUSHION - STANDARD | PROCUSHION - PREMIUM |
|---------------------------------|---------------------------------|
| Thickness: Approx. 105-110 mils | Thickness: Approx. 140-145 mils |
| 1 Coat - Acrylic Resurfacer | 1 Coat - Acrylic Resurfacer |
| 3 Coats - CushionMaster II | 5 Coats - CushionMaster II |
| 2 Coats - CushionMaster I | 2 Coats - CushionMaster I |
| 2 Coats - Flexible Concentrate | 2 Coats - Flexible Concentrate |

CUSHIONMASTER II

Base layers filled with coarse rubber particles to provide the build, or thickness of the system.

CUSHIONMASTER I

Top layers fortified with small rubber particles, to fill and smooth out the coarse rubber texture, and prepare to accept the colored surface coatings.

FLEXIBLE CONCENTRATE

Elastomeric acrylic surfacing layers. Mix with ColorPlus™ Pigment Dispersion to achieve the desired color. Contains proprietary acrylic resin to match the flexibility of the CushionMaster layers.

CUSHIONMASTER™ I

FINE RUBBER

| PRODUCT # | DESCRIPTION | COVERAGE | WEIGHT | PRICE |
|-----------|------------------|--------------|----------|------------|
| C1450P | 5 - Gallon Pail | 450 sq. ft. | 50 lbs. | \$102.99 |
| C1450K | 30 - Gallon Keg | 2700 sq. ft. | 290 lbs. | \$635.99 |
| C1450D | 55 - Gallon Drum | 4950 sq. ft. | 550 lbs. | \$1,060.99 |

MIXING PROCEDURES:

CushionMaster I 10 gallons
Water 3 gallons

MATERIAL REQUIREMENTS (coverage - 90 sf/gal):

.10 gallons per square yard per coat (.20 gallon per square yard for two coats).

CUSHIONMASTER™ II

COARSE RUBBER

| PRODUCT # | DESCRIPTION | COVERAGE | WEIGHT | PRICE |
|-----------|------------------|--------------|----------|------------|
| C1460P | 5 - Gallon Pail | 300 sq. ft. | 50 lbs. | \$102.99 |
| C1460K | 30 - Gallon Keg | 1800 sq. ft. | 290 lbs. | \$635.99 |
| C1460D | 55 - Gallon Drum | 3300 sq. ft. | 550 lbs. | \$1,060.99 |

MIXING PROCEDURES:

CushionMaster II 10 gallons
Water 3 gallons

MATERIAL REQUIREMENTS (coverage - 60 sf/gal):

.15 gallons per square yard per coat (.45 gallon per square yard for three coats).



COLOR CONCENTRATE

A 100% acrylic emulsion coating designed for on-site mixing with silica sand and water. Ideal for color coating tennis courts, basketball courts, and other pavement surfaces. Two coats minimum are recommended. The sand used for mixing with color concentrate should be an 80-100 mesh, ultra fine sand. Apply by soft rubber squeegee. Available in 8 standard colors. Color Concentrate is available in 30-gallon Kegs "K", and 55-gallon drums "D".

*** Minimum order of 230 gallons**

| PRODUCT # | DESCRIPTION | COVERAGE | WEIGHT | PRICE |
|-----------|---------------------|--------------|----------|------------|
| C1030K | Forest Green - Keg | 5400 sq. ft. | 305 lbs. | \$671.99 |
| C1030D | Forest Green - Drum | 9900 sq. ft. | 570 lbs. | \$1,102.99 |
| C1050K | Light Green - Keg | 5400 sq. ft. | 305 lbs. | \$671.99 |
| C1050D | Light Green - Drum | 9900 sq. ft. | 570 lbs. | \$1,102.99 |
| C1082K | Dark Green - Keg | 5400 sq. ft. | 305 lbs. | \$671.99 |
| C1082D | Dark Green - Drum | 9900 sq. ft. | 570 lbs. | \$1,102.99 |
| C1000K | * Beige - Keg | 5400 sq. ft. | 305 lbs. | \$699.99 |
| C1000D | * Beige - Drum | 9900 sq. ft. | 570 lbs. | \$1,155.99 |
| C1070K | * Red - Keg | 5400 sq. ft. | 305 lbs. | \$653.99 |
| C1070D | * Red - Drum | 9900 sq. ft. | 570 lbs. | \$1,087.99 |
| C1060K | * Maroon - Keg | 5400 sq. ft. | 305 lbs. | \$653.99 |
| C1060D | * Maroon - Drum | 9900 sq. ft. | 570 lbs. | \$1,087.99 |
| C1040K | * Gray - Keg | 5400 sq. ft. | 305 lbs. | \$653.99 |
| C1040D | * Gray - Drum | 9900 sq. ft. | 570 lbs. | \$1,087.99 |
| C1010K | Blue - Keg | 5400 sq. ft. | 305 lbs. | \$653.99 |
| C1010D | Blue - Drum | 9900 sq. ft. | 570 lbs. | \$1,087.99 |

MIXING PROCEDURES:

Color Concentrate..... 55 gallons
 Water..... 28-30 gallons
 Sand (80-100 Mesh)..... 400 lbs.

MATERIAL REQUIREMENTS (coverage - 180 sf/gal):

.05 to .07 gallons per square yard per coat. A minimum of two coats are recommended.

COLOR CONCENTRATE WITH SAND

Similar to our standard Concentrate but with sand already added. Color Concentrate™ with Sand takes the guesswork out of choosing the right type of sand. Easy to use, just add water and apply by soft rubber squeegee. Available in 8 standard colors. Color Concentrate [with sand] is available in 30-gallon Kegs "K", and 55-gallon drums "D".

*** Minimum order of 230 gallons**

| PRODUCT # | DESCRIPTION | COVERAGE | WEIGHT | PRICE |
|-----------|---------------------|--------------|----------|------------|
| C1130K | Forest Green - Keg | 3750 sq. ft. | 390 lbs. | \$671.99 |
| C1130D | Forest Green - Drum | 6875 sq. ft. | 660 lbs. | \$1,102.99 |
| C1150K | Light Green - Keg | 3750 sq. ft. | 390 lbs. | \$671.99 |
| C1150D | Light Green - Drum | 6875 sq. ft. | 660 lbs. | \$1,102.99 |
| C1182K | Dark Green - Keg | 3750 sq. ft. | 390 lbs. | \$671.99 |
| C1182D | Dark Green - Drum | 6875 sq. ft. | 660 lbs. | \$1,102.99 |
| C1100K | * Beige - Keg | 3750 sq. ft. | 390 lbs. | \$699.99 |
| C1100D | * Beige - Drum | 6875 sq. ft. | 660 lbs. | \$1,155.99 |
| C1170K | * Red - Keg | 3750 sq. ft. | 390 lbs. | \$653.99 |
| C1170D | * Red - Drum | 6875 sq. ft. | 660 lbs. | \$1,087.99 |
| C1160K | * Maroon - Keg | 3750 sq. ft. | 390 lbs. | \$653.99 |
| C1160D | * Maroon - Drum | 6875 sq. ft. | 660 lbs. | \$1,087.99 |
| C1140K | * Gray - Keg | 3750 sq. ft. | 390 lbs. | \$653.99 |
| C1140D | * Gray - Drum | 6875 sq. ft. | 660 lbs. | \$1,087.99 |
| C1110K | Blue - Keg | 3750 sq. ft. | 390 lbs. | \$653.99 |
| C1110D | Blue - Drum | 6875 sq. ft. | 660 lbs. | \$1,087.99 |

MIXING PROCEDURES:

Color Concentrate with Sand 30 gallons
 Water..... 12 gallons

MATERIAL REQUIREMENTS (coverage - 125 sf/gal):

.07 to .09 gallons per square yard per coat. A minimum of two coats are recommended.

DESIGNED TO SMOOTH & LEVEL PAVEMENT PRIOR TO COLOR COATING

Available in 100% acrylic formulations. SportMaster Resurfacers can be used for both coating and patching.

ACRYLIC RESURFACER

THE ULTIMATE TENNIS COURT RESURFACER

Acrylic Resurfacer Features:

- 100% Acrylic
- Available in both black and neutral colors
- Can be used as a coating or patching material
- Also available with sand already added [Acrylic Resurfacer w/ Sand]

| PRODUCT # | DESCRIPTION | COVERAGE | WEIGHT | PRICE |
|-----------|--------------------------|---------------|----------|------------|
| C1300P | Black 5 - Gallon Pail | 625 sq. ft. | 48 lbs. | \$96.99 |
| C1300K | Black 30 - Gallon Keg | 3,750 sq. ft. | 280 lbs. | \$608.99 |
| C1300D | Black 55 - Gallon Drum | 6,875 sq. ft. | 525 lbs. | \$1,008.99 |
| C1300B | Bulk | - | - | - quoted - |
| C1310P | Neutral 5 - Gallon Pail | 625 sq. ft. | 48 lbs. | \$96.99 |
| C1310K | Neutral 30 - Gallon Keg | 3,750 sq. ft. | 280 lbs. | \$608.99 |
| C1310D | Neutral 55 - Gallon Drum | 6,875 sq. ft. | 525 lbs. | \$1,008.99 |
| C1310B | Bulk | - | - | - quoted - |

MIXING PROCEDURES:

Acrylic Resurfacer 55 gallons
Water 36-39 gallons
Sand [50-60 Mesh] 800 lbs.

MATERIAL REQUIREMENTS

[coverage - 125 sf/gal]:

.07 to .09 gallon per square yard per coat.

ACRYLIC RESURFACER WITH SAND

| PRODUCT # | DESCRIPTION | COVERAGE | WEIGHT | PRICE |
|-----------|------------------------|---------------|----------|------------|
| C1330P | Black 5 - Gallon Pail | 400 sq. ft. | 73 lbs. | \$96.99 |
| C1330K | Black 30 - Gallon Keg | 2,400 sq. ft. | 435 lbs. | \$608.99 |
| C1330D | Black 55 - Gallon Drum | 4,400 sq. ft. | 785 lbs. | \$1,008.99 |

MIXING PROCEDURES:

Acrylic Resurfacer with Sand 5 gallons
Water 2 gallons
Acrylic Resurfacer with Sand 30 gallons
Water 12 gallons

MATERIAL REQUIREMENTS

[coverage - 80 sf/gal]:

.11 to .13 gallon per square yard per coat.

FLEXIBLE ACRYLIC RESURFACER™

Flexible Acrylic Resurfacer Features:

- Elastomeric formula for long-term flexibility
- Ideal for crack repair, membrane repairs & cushioned courts
- Neutral color

| PRODUCT # | DESCRIPTION | COVERAGE | WEIGHT | PRICE |
|-----------|------------------|---------------|----------|------------|
| C1320P | 5 - Gallon Pail | 625 sq. ft. | 48 lbs. | \$99.99 |
| C1320K | 30 - Gallon Keg | 3,750 sq. ft. | 280 lbs. | \$632.99 |
| C1320D | 55 - Gallon Drum | 6,875 sq. ft. | 525 lbs. | \$1,033.99 |

MIXING PROCEDURES:

Flexible Acrylic Resurfacer 55 gallons
Silica Sand [50-60 Mesh] 500-600 lbs.
Water 33 gallons

MATERIAL REQUIREMENTS

[coverage - 125 sf/gal]:

.07 to .09 gallon per square yard per coat.



Neutral Resurfacer



Black Resurfacer



ALL CATALOG PRICES ARE F.O.B. SANDUSKY, OHIO



ACRYLIC PATCH BINDER

A 100% acrylic liquid binder designed for on-site mixing with sand and cement. Ideal for leveling and repairing low spots and depressions up to 1/2" deep on tennis court and other sport surface pavements.

NOTE: Patching Straightedges available on page 118.

| PRODUCT # | DESCRIPTION | WEIGHT | PRICE |
|-----------|------------------|----------|------------|
| C1480P | 5 - Gallon Pail | 47 lbs. | \$184.99 |
| C1480K | 30 - Gallon Keg | 280 lbs. | \$1,158.99 |
| C1480D | 55 - Gallon Drum | 500 lbs. | \$2,019.99 |

MIXING PROCEDURES:

Acrylic Patch Binder 1 gallon
 Sand [50-60 Mesh] 30 lbs.
 Cement 6 lbs. [approximately 1/2 gallon]

NOTE: Thoroughly mix dry sand and cement together first before adding to Acrylic Patch Binder.

MATERIAL REQUIREMENTS (coverage):

One gallon will produce enough patch mix (when mixed with sand and cement) to fill .86 square yard [approximately 7.75 square feet] at 1/4" depth.



CRACKMAGIC™

Premium grade heavy-bodied 100% acrylic elastomeric crack filler. Remains flexible at temperatures below zero. Available in neutral, green and red. Packaged four 1-gallon pails to a box or sold individually.

| PRODUCT # | DESCRIPTION | WEIGHT | PRICE |
|-----------|-------------------------|---------|---------|
| C1590G | Neutral 1 - Gallon Pail | 10 lbs. | \$71.99 |
| C1570G | Green 1 - Gallon Pail | 10 lbs. | \$71.99 |
| C1580G | Red 1 - Gallon Pail | 10 lbs. | \$71.99 |

MIXING PROCEDURES: MATERIAL REQUIREMENTS (coverage):

Use as is. Do not dilute. Typically, one gallon will fill approximately 75-150 feet of cracks depending on depth and width of crack.



ACRYLIC CRACK PATCH

A 100% acrylic trowel grade crack filler. Fortified with sand for filling cracks up to 1" wide on tennis courts and other sport surface pavements. Available in red, green, blue or neutral. Packaged in four 1-gallon pails to a box or sold individually.

| PRODUCT # | DESCRIPTION | WEIGHT | PRICE |
|-----------|-------------------------|---------|---------|
| C1520G | Neutral 1 - Gallon Pail | 17 lbs. | \$30.99 |
| C1500G | Green 1 - Gallon Pail | 17 lbs. | \$30.99 |
| C1510G | Red 1 - Gallon Pail | 17 lbs. | \$30.99 |
| C1515G | Blue 1 - Gallon Pail | 17 lbs. | \$30.99 |

MIXING PROCEDURES: MATERIAL REQUIREMENTS (coverage):

Use as is. Do not dilute. Typically, one gallon will fill approximately 75-150 feet of cracks depending on depth and width of crack.



COURTFLEX™ CRACK SEALANT

A 100% acrylic elastomeric crack sealant designed for filling cracks up to 1/2" wide. Flexible down to -10°F. Available in red, green or neutral. Packaged six jugs to a box or sold individually.

| PRODUCT # | DESCRIPTION | WEIGHT | PRICE |
|-----------|------------------------|---------|---------|
| C1560G | Neutral 1 - Gallon Jug | 10 lbs. | \$42.99 |
| C1540G | Green 1 - Gallon Jug | 10 lbs. | \$42.99 |
| C1550G | Red 1 - Gallon Jug | 10 lbs. | \$42.99 |

MIXING PROCEDURES: MATERIAL REQUIREMENTS (coverage):

Use as is. Do not dilute. Typically, one gallon will fill approximately 150-200 feet of cracks depending on depth and width of crack.



CLEAR CRACK SEALANT

Clear drying acrylic crack sealant for small cracks on sport surfaces. Keep cracks sealed on sport surfaces without seeing unsightly repairs.

| PRODUCT # | DESCRIPTION | WEIGHT | PRICE |
|-----------|-----------------|---------|---------|
| C1530G | 1 - Gallon Pail | 10 lbs. | \$66.99 |

MIXING PROCEDURES: MATERIAL REQUIREMENTS (coverage):

Use as is. Do not dilute. Typically, one gallon will fill approximately 150-200 feet of cracks depending on depth and width of crack.

TEXTURED WHITE LINE PAINT

A 100% acrylic water-based line paint highly pigmented for one coat coverage. Packaged in easy-to-use 1-gallon jugs with pour spouts, and 5-gallon pails.

NOTE: See Line Taping Machine on page 117.



| PRODUCT # | DESCRIPTION | WEIGHT | PRICE |
|-----------|--------------------------|---------|----------|
| C1620G | Textured 1 - Gallon Jug | 13 lbs. | \$53.99 |
| C1620P | Textured 5 - Gallon Pail | 65 lbs. | \$211.99 |

MIXING PROCEDURES:

Use as is. Do not dilute.

MATERIAL REQUIREMENTS (coverage):

500-600 feet of 2" line per gallon.

STRIPE RITE™

FOR SHARP LINES! A 100% acrylic, clear-drying emulsion primer that is applied prior to T/C line paint to fill the minor voids between the masking tape and court surface. Assures crisp, razor-sharp lines.

| PRODUCT # | DESCRIPTION | WEIGHT | PRICE |
|-----------|-----------------|---------|----------|
| C1610G | 1 - Gallon Jug | 10 lbs. | \$31.99 |
| C1610P | 5 - Gallon Pail | 47 lbs. | \$114.99 |

MIXING PROCEDURES:

Use as is. Do not dilute.

MATERIAL REQUIREMENTS (coverage):

500-600 feet of 2" line per gallon.



ACRYLIC ADHESION PROMOTER

100% acrylic emulsion primer designed to promote the adhesion of repair products and coatings. Apply by spray, roller, or brush. Ready to use.

| PRODUCT # | DESCRIPTION | COVERAGE | WEIGHT | PRICE |
|-----------|------------------|----------------|----------|------------|
| C1650P | 5 - Gallon Pail | 1,250 sq. ft. | 46 lbs. | \$100.99 |
| C1650K | 30 - Gallon Keg | 7,500 sq. ft. | 270 lbs. | \$637.99 |
| C1650D | 55 - Gallon Drum | 13,750 sq. ft. | 510 lbs. | \$1,091.99 |

MIXING PROCEDURES:

Use as is. Do not dilute.

MATERIAL REQUIREMENTS (coverage):

200-300 square feet per gallon.



SPORTWAX™ CLEAR COAT

Clear drying, 100% acrylic top coat for tennis courts, basketball courts, and more. Extends the life of surface coatings. Apply by squeegee, lambswool applicator, or spray. SportWax Clear Coat is a ready-to-use product.

| PRODUCT # | DESCRIPTION | COVERAGE | WEIGHT | PRICE |
|-----------|-----------------|--------------|---------|----------|
| C1850P | 5 - Gallon Pail | 1250 sq. ft. | 46 lbs. | \$120.99 |

MIXING PROCEDURES:

Use as is. Do not dilute.

MATERIAL REQUIREMENTS (coverage):

200-300 feet per gallon.



The SkateMaster System is comprised of the following products:

ACRYLIC RESURFACER - [Neutral]™

[1-2 coats] to fill voids in pavement and provide texture to ensure thorough coverage of the SkateMaster Coating.

SKATEMASTER™

[2-3 coats] SkateMaster comes in a neutral base, and is mixed with ColorPlus Pigment Dispersion to achieve any of the standard ColorPlus colors.

SKATEMASTER

Thickness: Approx. 40-45 mils

1 Coat - Acrylic Resurfacer

2 Coats - SkateMaster

SportMaster®
SPORT SURFACES

SKATEMASTER™ SYSTEM

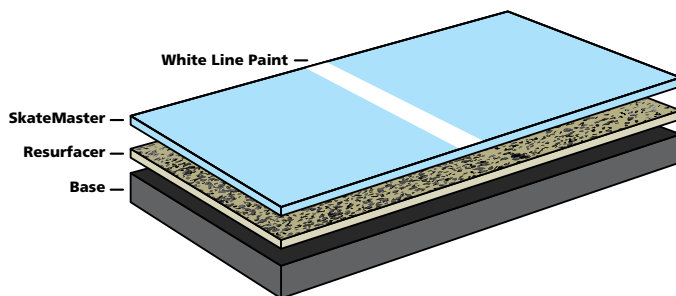
A 100% ACRYLIC, SPECIALIZED SURFACING SYSTEM FOR INLINE ROLLER HOCKEY, SKATEBOARDING AND MORE



HIGH PERFORMANCE SURFACE COATING

SkateMaster System Uses:

- Rollerblading, skateboarding, and other roller sports
- Shuffleboard courts
- Playgrounds, game courts, basketball, etc.
- Multipurpose or heavy use areas



NEUTRAL SKATEMASTER™

| PRODUCT # | DESCRIPTION | COVERAGE | WEIGHT | PRICE |
|-----------|------------------|--------------|----------|------------|
| C1800K | 30 - Gallon Keg | 4500 sq.ft. | 305 lbs. | \$730.99 |
| C1800D | 55 - Gallon Drum | 8250 sq. ft. | 520 lbs. | \$1,208.99 |

MIXING PROCEDURES:

Neutral SkateMaster™55 gallons
ColorPlus™ Pigment Dispersion.....4 gallons

NOTE: Up to 8 lbs. per gallon of sand [80-100 mesh] can be added to SkateMaster™ for a customized multipurpose surface.

MATERIAL REQUIREMENTS (coverage - 150 sf/gal):

.06 to .08 gallons per square yard per coat. (.12 to .16 gallons per square yard for two coats).

| | | | | | |
|------------------------------------|------------|----------------------------------|----------------------------------|--------|-----------|
| MAROON | GRAY | LIGHT BLUE | ICE BLUE LEED CREDIT *SRI=62 | ORANGE | BRITE RED |
| TOURNAMENT PURPLE | BLUE | DOVE GRAY LEED CREDIT *SRI=33 | SANDSTONE LEED CREDIT *SRI=46 | YELLOW | BLACK |
| FOREST GREEN | DARK GREEN | BROWN COLORPLUS FUSION | | | |
| LIGHT GREEN LEED CREDIT *SRI=31 | BEIGE | RED LEED CREDIT *SRI=36 | | | |

NOTE: Colors will vary somewhat due to printing limitations. Ask your SealMaster Representative for a color chip card for more accurate representation.

*Solar Reflectance Index [SRI] is the percentage of solar energy that is reflected by a surface. These specific colors qualify for the LEED [Leadership in Energy and Environmental Design] program under Section SS Credit 7.1: Heat Island Effect: Non-Roof. For more information visit www.usgbc.org or contact a LEED accredited professional.



TRACKMASTER PRO™

FULL-DEPTH RUBBERIZED RUNNING TRACK SURFACING SYSTEM

AVAILABLE IN BLACK OR MULTIPLE COLORS

Multi-resin running track surfaces for college, high school, and other competition & recreational running tracks. Provides excellent footing and shock absorption, along with pleasing aesthetics.

For more information, contact your representative or visit www.sportmaster.net/trackmasterpro



SportMaster® SPORT SURFACES

TRACKMASTER PLUS™

A 100% ACRYLIC COATING FOR RUNNING TRACK & OTHER RECREATIONAL SURFACES

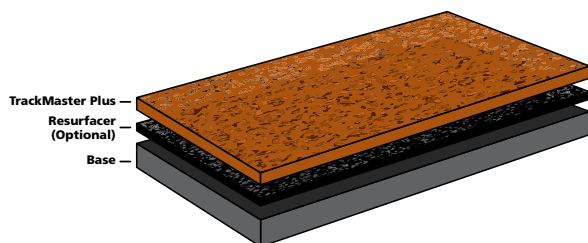


AVAILABLE IN SEVERAL COLORS

Premium quality, 100% acrylic emulsion fortified with rubber particles designed for coating asphalt and latex/rubber running track surfaces. TrackMaster Plus is available in attractive colors using the SportMaster ColorPlus™ System. TrackMaster Plus contains rubber granules. Squeegee, brush or spray application.

TrackMaster Plus Product Uses:

- Running Tracks
- Walking paths and jogging trails
- Coatings for rubberized asphalt tracks
- Asphalt, concrete, or existing acrylic surfaces



TRACKMASTER PLUS

Thickness: Approx. 50-55 mils

- 1 Coat - Acrylic Resurfacer
- 2 Coats - TrackMaster Plus

| PRODUCT # | DESCRIPTION | COVERAGE | WEIGHT | PRICE |
|-----------|--------------------------|--------------|----------|------------|
| C1740K | Neutral 30 - Gallon Keg | 1500 sq. ft. | 290 lbs. | \$525.99 |
| C1740D | Neutral 55 - Gallon Drum | 2750 sq. ft. | 550 lbs. | \$849.99 |
| C1709K | Red 30 - Gallon Keg | 1500 sq. ft. | 290 lbs. | \$650.99 |
| C1709D | Red 55 - Gallon Drum | 2750 sq. ft. | 550 lbs. | \$1,038.99 |

MIXING PROCEDURES:

Neutral TrackMaster Plus.....55 gallons
Water.....13-14 gallons
ColorPlus Pigment Dispersion [page 102].....4 gallons

MATERIAL REQUIREMENTS [coverage - 50 sf/gal]:

Approximately .15 to .20 gallon per square yard per coat depending on surface porosity.



MAROON

GRAY

LIGHT BLUE

ICE BLUE
LEED CREDIT *SRI=62

ORANGE

FOREST GREEN

TOURNAMENT
PURPLE

BLUE

DOVE GRAY
LEED CREDIT *SRI=33

SANDSTONE
LEED CREDIT *SRI=46

YELLOW

LIGHT GREEN
LEED CREDIT *SRI=31



LANE ONE™

A 100% acrylic, trowel-grade patching material fortified with sand and rubber. Ideal for repairing running lanes and field event runways and pads. Also used for filling cracks up to 1" wide. Lane One is Black, but can be coated with TrackMaster Plus to match surface color of track area.

TRACKFLEX™ CRACK SEALANT



Acrylic elastomeric pourable crack sealant designed for sealing cracks up to 1/2" wide in asphalt or latex/rubber track surfaces. TrackFlex is black, but can be coated with TrackMaster Plus to match surface color of track area.

| PRODUCT # | DESCRIPTION | WEIGHT | PRICE |
|-----------|----------------|---------|----------|
| C1760G | 1 - Gallon Jug | 10 lbs. | \$ 44.99 |

MIXING PROCEDURES:

Use as is. Do not dilute. Smooth flush with rubber squeegee.

MATERIAL REQUIREMENTS (coverage):

Typically, one gallon will fill approximately 75-150 feet of cracks depending on depth and width of crack.

| PRODUCT # | DESCRIPTION | WEIGHT | PRICE |
|-----------|-----------------|---------|---------|
| C1750P | 5 - Gallon Pail | 51 lbs. | \$81.99 |

MIXING PROCEDURES:

Use as is. Do not dilute. Apply with soft rubber squeegee.

MATERIAL REQUIREMENTS (coverage):

Approximately 1 gallon per square yard at 1/8" depth. Ultimate coverage will be dependent upon depth of repair.

BLACK DISPERSION

For tinting running track latex and neutral coatings. Mix 1 gallon of Black Dispersion per 55 gallons of latex or neutral coatings.



| PRODUCT # | DESCRIPTION | WEIGHT | PRICE |
|-----------|------------------|----------|------------|
| C1660G | 1 - Gallon Pail | 11 lbs. | \$27.99 |
| C1660P | 5 - Gallon Pail | 53 lbs. | \$123.99 |
| C1660D | 55 - Gallon Drum | 590 lbs. | \$1,317.99 |

NOTE: Colors will vary somewhat due to printing limitations. Ask your SealMaster Representative for a color chip card for more accurate representation.

*Solar Reflectance Index (SRI) is the percentage of solar energy that is reflected by a surface. These specific colors qualify for the LEED (Leadership in Energy and Environmental Design) program under Section SS Credit 7.1: Heat Island Effect: Non-Roof. For more information visit www.usgbc.org or contact a LEED accredited professional.

DARK GREEN

BROWN
COLORPLUS FUSION

BRITE RED

BEIGE

RED
LEED CREDIT *SRI=36

BLACK



TENNIS NETS

TOURNAMENT TAPERED - 3mm braided body, double [2] layer vinyl headband, double top 6 mesh body, fiberglass dowels, 42' x 3 1/4' [42" high at posts - tapers to 36]

TOURNAMENT DH - DH-3mm braided body, 42' x 3 1/4', double [2] layer vinyl headband, coated cable, dowels: also available in 33' and 36' lengths for single courts.

| PRODUCT # | DESCRIPTION | WEIGHT | PRICE |
|-----------|--------------------|---------|----------|
| T5350 | Tournament Tapered | 24 lbs. | \$253.99 |
| T5355 | Tournament DH | 19 lbs. | \$187.99 |



NET ACCESSORIES

| PRODUCT # | DESCRIPTION | WEIGHT | PRICE |
|-----------|-----------------------------------------------------|--------|---------|
| T5400 | Deluxe Adjustable Center Strap - 2" Polyester White | 1 lb. | \$23.99 |
| T5410 | Center Pipe Anchor - 1.9" O.D. Galvanized Steel | 2 lbs. | \$25.99 |

POST SLEEVE T-PLUGS



| PRODUCT # | DESCRIPTION | WEIGHT | PRICE |
|-----------|----------------------------------------------------------------------|--------|----------|
| T5390 | Steel T-Plugs - Round for 2 7/8" O.D. and 3" O.D. [set of 2] - Black | 6 lbs. | \$117.99 |
| T5395 | Steel T-Plugs - Square 3" [set of 2] - Black | 6 lbs. | \$117.99 |



Premier Net Posts available in Round or Square design.



E-Z Tennis Post



Post Sleeves

NET POSTS AND SLEEVES

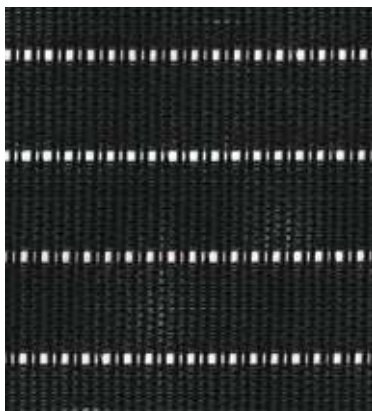
| PRODUCT # | DESCRIPTION | WEIGHT | PRICE |
|-----------------------------------------------------------------------------|------------------------------------|---------|----------|
| Premier Net Posts - Round Round internal wind net posts - 3" O.D. | | | |
| T5360G | Net Posts - Green | 46 lbs. | \$593.99 |
| T5360B | Net Posts - Black | 46 lbs. | \$593.99 |
| T5365 | Galvanized Round Net Post Sleeves | 10 lbs. | \$126.99 |
| Premier Net Posts - Square Square internal wind net posts - 3" sq. | | | |
| T5370G | Net Posts - Green | 54 lbs. | \$625.99 |
| T5370B | Net Posts - Black | 54 lbs. | \$625.99 |
| T5375 | Galvanized Square Net Post Sleeves | 35 lbs. | \$247.99 |
| E-Z Tennis Posts - Round Round external wind net posts - 2 7/8" O.D. | | | |
| T5380G | Net Posts - Green | 62 lbs. | \$568.99 |
| T5380B | Net Posts - Black | 62 lbs. | \$568.99 |
| T5385 | PVC Round Net Post Sleeves | 5 lbs. | \$109.99 |



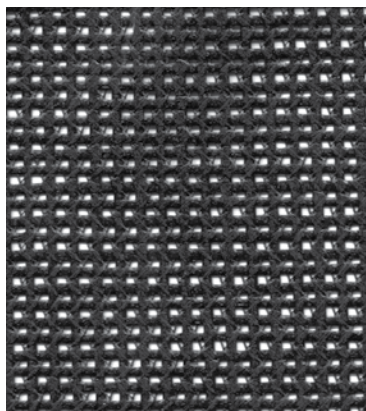
PICKLEBALL / KIDS TENNIS

| PRODUCT # | DESCRIPTION | WEIGHT | PRICE |
|---------------------------------------------------------------|----------------------------------------|---------|----------|
| Premier Net Posts - Round [36" above ground] - 3" O.D. | | | |
| T5475 | Premier 36" Green | 42 lbs. | \$593.99 |
| T5480 | Premier 36" Black | 42 lbs. | \$593.99 |
| T5365 | Galvanized Round Net Post Sleeves | 10 lbs. | \$126.99 |
| T5485 | Pickleball / Kids Net - No Gap | 14 lbs. | \$142.99 |
| T5486 | Pickleball / Kids Net - Gap Underneath | 14 lbs. | \$142.99 |

ALL CATALOG PRICES ARE F.O.B. SANDUSKY, OHIO



POLY-PRO



VCP VINYL

Digital printing and logos
available at additional cost
[VCP only]

WINDSCREENS

| PRODUCT # | DESCRIPTION | WEIGHT | PRICE |
|-------------------------------------------------------------------------------------------|--------------------------------------|------------------|---------------|
| Poly-Pro / Open Mesh Available in 6' and 9' heights (100% Polypropylene) | | | |
| T5435G | 6' Dark Green | .06 lbs./sq. ft. | \$1.46/sq.ft. |
| T5440G | 9' Dark Green - Includes Center Tab* | .06 lbs./sq. ft. | \$1.54/sq.ft. |
| T5435B | 6' Black | .06 lbs./sq. ft. | \$1.52/sq.ft. |
| T5440B | 9' Black - Includes Center Tab* | .06 lbs./sq. ft. | \$1.54/sq.ft. |
| VCP Vinyl / Open Mesh Available in 6' and 9' heights (50% Vinyl, 50% Polyester) | | | |
| T5425G | 6' Dark Green | .06 lbs./sq. ft. | \$1.20/sq.ft. |
| T5430G | 9' Dark Green - Includes Center Tab* | .06 lbs./sq. ft. | \$1.24/sq.ft. |
| T5425B | 6' Black | .06 lbs./sq. ft. | \$1.20/sq.ft. |
| T5430B | 9' Black - Includes Center Tab* | .06 lbs./sq. ft. | \$1.24/sq.ft. |

* Includes center tab with grommets for attaching center to fence

All windscreens grommeted every 18" on top, bottom, and middle (horizontal connections)
and every 12" on the sides (vertical connections)

** Custom labor charges may apply



WINDSCREEN ACCESSORIES

| PRODUCT # | DESCRIPTION | PRICE |
|-----------|----------------------------------------------------------------|----------|
| T5445 | AVR Air Vent Reinforced | \$17.99 |
| T5450 | Die Cut Air Vent [VCP only] | \$11.99 |
| T5455 | C-Snaps 3" Plastic - Box of 100 | \$64.99 |
| T5460 | Tie Wraps case of 100 - 7" 50 lbs. break-strength | \$15.99 |
| T5462 | Tie Wraps case of 100 - 8" 120 lbs. break-strength | \$29.99 |
| T5465 | Braided Lacing Cord Reel - 600 ft. black (fastens windscreens) | \$102.99 |



BIG PORTABLE



LIGHT PORTABLE

PORTABLE NET SYSTEMS

| PRODUCT # | DESCRIPTION | WEIGHT | PRICE |
|-----------|--------------------|----------|------------|
| T5491 | Big Portable Net | 215 lbs. | \$2,821.99 |
| T5495 | Light Portable Net | 58 lbs. | \$437.99 |



LINE TAPING MACHINE

A must for striping tennis courts, basketball courts, and other surfaces where precision markings are required. Lays tape for lines up to 4" wide. Comes with guides for 24mm, 36mm, and 48mm tape (metric equivalents for 1", 1 1/2" & 2"). Imperial tape guides are also available.

| PRODUCT # | DESCRIPTION | WEIGHT | PRICE |
|-----------|-------------------------------------------------------------------|---------|------------|
| T7600 | Line Taping Machine | 16 lbs. | \$1,529.99 |
| T7610 | Pole Extension Kit [For 3-point lines and extra large circles] | 13 lbs. | \$357.99 |



MYSTICWASHER

IDEAL FOR FLAT SURFACE AND VERTICAL CLEANING!

MysticWasher Features:

- Available in 24" and 30" cleaning widths
- Housing is aircraft aluminum and powder-coated steel
- Pneumatic, adjustable front casters
- Siphon tube chemical injection system
- Professional spray wand with five quick-connect tips

| PRODUCT # | DESCRIPTION | WEIGHT |
|-----------|-----------------------------|----------|
| T6011 | MW24 24" Cleaning Path | 200 lbs. |
| T6012 | MW30 30" Cleaning Path | 200 lbs. |
| T6013 | Multi-Tool for MysticWasher | 10 lbs. |

* Call for pricing



PATCHING STRAIGHTEDGE

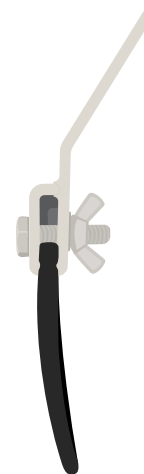
The smoothest patches ever in just one pass of the straightedge. Ideal for patching and filling low spots in tennis courts, parking lots, and driveways. Makes patching a one-man operation. Lightweight yet durable metal construction. Available in 4, 6, 8, and 10 ft. widths. Includes wood handle.

| PRODUCT # | DESCRIPTION | WEIGHT | PRICE |
|-----------|---------------------|---------|----------|
| T1500 | 4-foot with Handle | 12 lbs. | \$126.99 |
| T1510 | 6-foot with Handle | 15 lbs. | \$143.99 |
| T1520 | 8-foot with Handle | 20 lbs. | \$161.99 |
| T1530 | 10-foot with Handle | 25 lbs. | \$178.99 |
| T1490 | Straightedge Handle | 2 lbs. | \$22.99 |

* NOTE: The 10-foot straight edge must ship common carrier. Others can ship UPS.



FLAT TOP



LIGHTWEIGHT ALUMINUM SPORT SQUEEGEE

THE ULTIMATE SQUEEGEE

Ideal for Tennis Court Color Coatings as well as pavement sealers. Features soft, tapered rubber blade for superior results on both sport courts as well as asphalt pavement.

ROUND TOP



FLAT TOP SQUEEGEE - 65 DUROMETER

| PRODUCT # | DESCRIPTION | WEIGHT | PRICE |
|-----------|------------------------------|--------|----------|
| T1277 | 24" Squeegee Complete - Flat | 4 lbs. | \$108.99 |
| T1272 | 36" Squeegee Complete - Flat | 6 lbs. | \$130.99 |
| T1292 | 48" Squeegee Complete - Flat | 8 lbs. | \$154.99 |
| T1311 | 60" Squeegee Complete - Flat | 9 lbs. | \$157.99 |

RUBBER REFILLS:

| | | | |
|-------|--------------------------|--------|---------|
| T1278 | 24" Rubber Refill - Flat | 3 lbs. | \$25.99 |
| T1326 | 36" Rubber Refill - Flat | 3 lbs. | \$37.99 |
| T1327 | 48" Rubber Refill - Flat | 3 lbs. | \$49.99 |
| T1324 | 60" Rubber Refill - Flat | 4 lbs. | \$57.99 |

ROUND TOP SQUEEGEE - 50 DUROMETER (SOFTER)

| PRODUCT # | DESCRIPTION | WEIGHT | PRICE |
|-----------|-------------------------------|--------|----------|
| T1279 | 24" Squeegee Complete - Round | 4 lbs. | \$118.99 |
| T1273 | 36" Squeegee Complete - Round | 6 lbs. | \$142.99 |
| T1274 | 48" Squeegee Complete - Round | 8 lbs. | \$168.99 |
| T1282 | 60" Squeegee Complete - Round | 9 lbs. | \$192.99 |

RUBBER REFILLS:

| | | | |
|-------|---------------------------|--------|---------|
| T1283 | 24" Rubber Refill - Round | 3 lbs. | \$36.99 |
| T1281 | 36" Rubber Refill - Round | 3 lbs. | \$54.99 |
| T1301 | 48" Rubber Refill - Round | 3 lbs. | \$74.99 |
| T1321 | 60" Rubber Refill - Round | 4 lbs. | \$98.99 |



DRILL PADDLE MIXER

Designed for mixing 55 gallon drums.



| PRODUCT # | DESCRIPTION | WEIGHT | PRICE |
|-----------|----------------------------------|--------|---------|
| T9000 | 30" height with 8.5" x 5" paddle | 3 lbs. | \$54.99 |
| T9001 | 48" height with 8.5" x 5" paddle | 4 lbs. | \$65.99 |



COURT DRY ROLLER

| PRODUCT # | DESCRIPTION | WEIGHT | PRICE |
|-----------|----------------------|--------|----------|
| T5505 | 36" Court Dry Roller | 6 lbs. | \$172.99 |



CUSTOM VINYL STENCIL

Custom vinyl stencils are a one-time use stencil for sport and pavement applications.

- Peel-and-stick to apply to the sport surface
- Carefully remove the top layer to expose the vinyl stencil
- Apply SportMaster Stripe-Rite around all edges to achieve sharp edges
- Paint over the stencil with the desired coating/paint color
- Available for single or multi-color designs

To get a quote, send a vector digital file by email to moreinfo@sportmaster.net.

PRODUCT

T2595

DESCRIPTION

Custom Vinyl Stencil



BASKETBALL GOAL ADJUSTABLE SYSTEM

Features:

- J-Bolt Anchor System
- Pressure Flex™ Goal
- 6'-10' Adjustable Rim Height
- Backboard and Pole Padding

| PRODUCT # | DESCRIPTION | WEIGHT | PRICE |
|-----------------------------------------------------------------------|------------------------------------------------------------|----------|------------|
| Adjustable Basketball Systems - 6" sq. Pole (Glass backboards) | | | |
| T5301 | Adjustable Basketball System - 4' Ext., 42" x 5' Backboard | 650 lbs. | \$2,769.99 |
| T5302 | Adjustable Basketball System - 4' Ext., 42" x 6' Backboard | 680 lbs. | \$2,930.99 |



BASKETBALL GOAL GOOSENECK SYSTEM

Features:

- Zinc Plated Pole and Hardware
- Heavy-duty backboard support braces
- Standard in-ground installation (Direct Bury)

| PRODUCT # | DESCRIPTION | WEIGHT | PRICE |
|-----------------------------------------------------------------|-----------------------------------------------------|----------|------------|
| Fan Shaped Steel Backboard - Designed for 10' rim height | | | |
| T5308 | Gooseneck Basketball Goal - 3.5" O.D. Pole, 3' Ext. | 278 lbs. | \$1,607.99 |
| T5309 | Gooseneck Basketball Goal - 4.5" O.D. Pole, 4' Ext. | 315 lbs. | \$2,008.99 |





Trailer Mounted Tanks

New Dual Pump
& Hose Reel Design

COLOR COATING MIXING TANKS

ULTIMATE MACHINES FOR MIXING & PUMPING
TENNIS COURT SURFACING MATERIALS

AVAILABLE IN SKID OR TRAILER MOUNT

Color Coating Mixing Tank Features:

- Dual 300 gallon tank design
- 2 Air-driven dual diaphragm 2-inch pumps
- 2 100-foot 1-inch hose reels with wands
- Dual basket strainers
- Water meter
- Gravity flow pipe for each tank
- Full-sweep, heavy duty agitation - hydraulically driven



Skid Mounted Tanks

| PRODUCT # | DESCRIPTION | WEIGHT |
|-----------|--------------------------------------------------------------------------------|------------|
| E2120 | Dual 300 Skid Unit | 4,425 lbs. |
| E2160 | Dual 300 Trailer Unit - Two [8,000 lbs.] axles with electric brakes and lights | 6,225 lbs. |

* Call for pricing

| | Dual 300 Skid | Dual 300 Trailer |
|--------|---------------|------------------|
| Height | 72" | 80" |
| Width | 80" | 98" |
| Length | 144" | 210" |

NEW EQUIPMENT



| PRODUCT # | DESCRIPTION | WEIGHT |
|-----------|---------------|----------|
| E1071 | Sport Wheeler | 235 lbs. |

* Call for pricing

SPORT WHEELER

BLEND & TRANSPORT COATINGS FOR
APPLICATION OF COURT SURFACES AND MORE

Updated design with easy-open valve and push handle. Deflector pan with separate controls to minimize impact of the pour and lessen pour marks on the surface.

Sport Wheeler Features:

- Full-sweep hand agitator
- 2" Molasses Valve Discharge
- Hinged Lid Opening
- Pneumatic Tires
- Deflector Pan for better control of pouring [easily removable for cleaning]

Anaheim Tennis & Pickleball Center
Anaheim, CA

Installer: **PROSURFACE inc.**



OFFICIAL
SURFACE OF



SportMaster®
SPORT SURFACES

Tournament-quality sport surfacing & repair products,
with experienced nationwide installers.

OVER 100 LOCATIONS NATIONWIDE